

Maximum Visual
and Thermal Performance

.....
new Colors
Collection
.....

Indoor & Outdoor Use:

Roller & retractable shades, zip screens, shade sails, pergolas & canopies, skylight shades, drop-arm awnings, sliding panels



■ **Blocks up to 97% of heat**
Soltis Perform 92 acts as a heat shield. Its micro-vents filter the heat, reducing a building's energy costs.

■ **Glare control with a view**
Providing maximum comfort with transparency, Soltis Perform 92's thermal and optical performance earns building certification points (LEED, BREEAM, Minergie, HQE, etc.).

■ **High color resistance over time**
Color is preserved even after several years of exposure (according to the ISO 105 A02 scale).

4x
MORE RESISTANT

Soltis Perform 92's resistance delivers greater durability than standard fabrics to provide you with better performance over a longer period of time.

2x
THINNER

A reduced thickness compared with standard fabrics enhances facade appearance, reducing bulk even with extended shade heights.

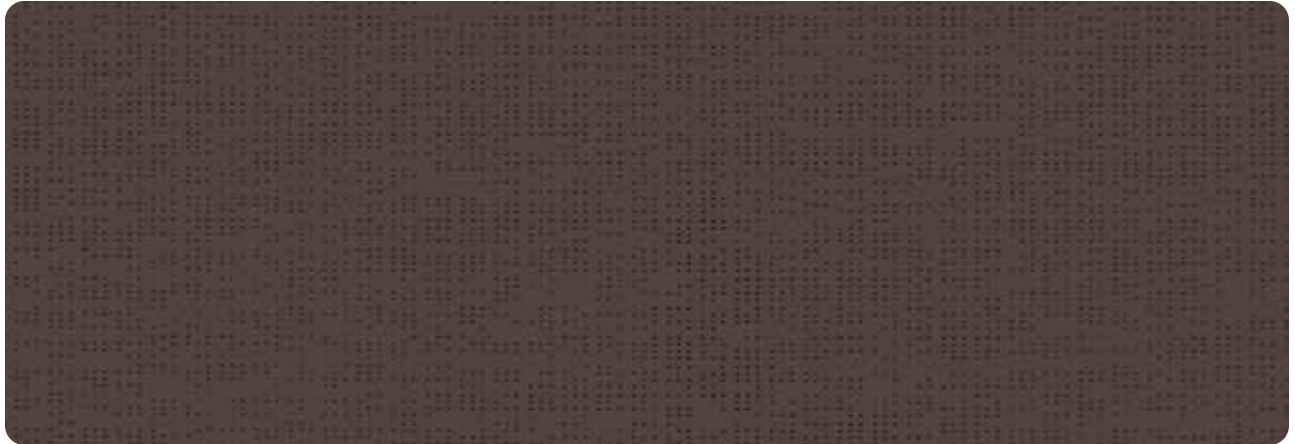


3 key properties of Soltis Perform 92

Dimensional stability
thanks to Preconstraint technology

Easy to clean

UV resistance



Bronze 69.6 in — 105.1 in

92-2043



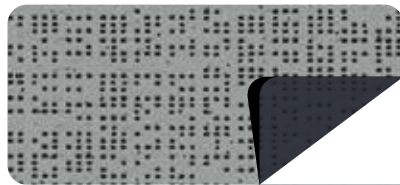
new Snow white 69.6 in — 105.1 in 92-50690



White 69.6 in — 105.1 in 92-2044



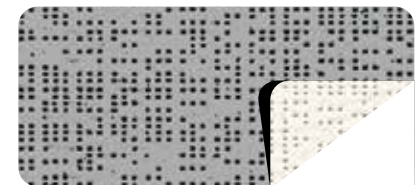
Boulder 69.6 in — 105.1 in 92-2171



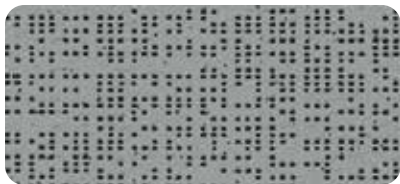
Alu/Anthracite 69.6 in 92-2068



Sandy beige 69.6 in — 105.1 in 92-2135



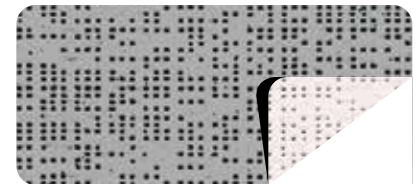
Alu/White 69.6 in — 105.1 in 92-2051



Beaten metal 69.6 in — 105.1 in 92-2045



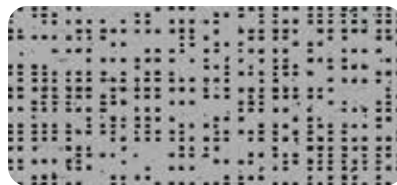
Cloud 69.6 in — 105.1 in 92-50272



Alu/Oat 69.6 in — 105.1 in 92-2046



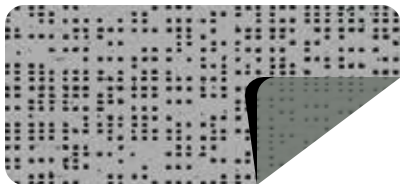
Concrete 69.6 in — 105.1 in 92-2167



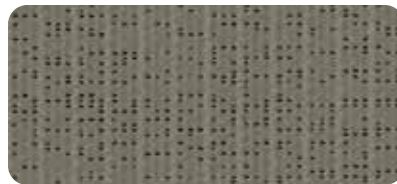
Alu/Alu 69.6 in — 105.1 in 92-2048



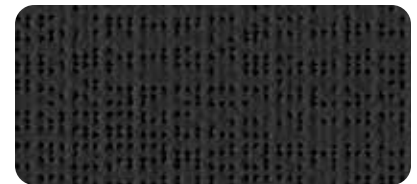
Anthracite 69.6 in — 105.1 in 92-2047



Alu/Medium grey 69.6 in — 105.1 in 92-2074



new Dark grey 69.6 in — 105.1 in 92-51177



new True black 69.6 in — 105.1 in 92-51176



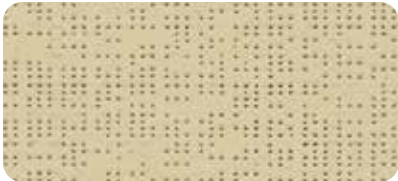
Champagne 69.6 in — 105.1 in 92-2175



new Quartz 69.6 in — 105.1 in 92-50303



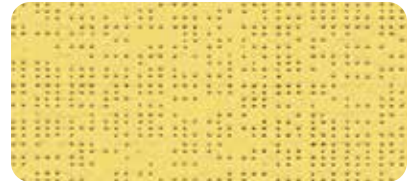
new Shea 69.6 in — 105.1 in 92-50843



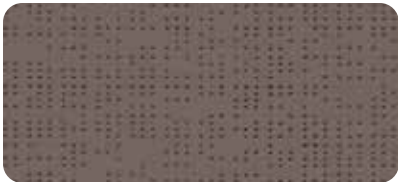
Hemp 69.6 in — 105.1 in 92-50265



Pepper 69.6 in — 105.1 in 92-2012



Gold 69.6 in 92-50273



Havana-Brown 69.6 in 92-50266



Bronze 69.6 in — 105.1 in 92-2043



Beetle 69.6 in 92-2149



new Taupe 69.6 in — 105.1 in 92-50850



Moss green 69.6 in 92-2158



new Tennis green 69.6 in 92-8056



new Green-grey 69.6 in 92-51179



Aniseed 69.6 in 92-2157



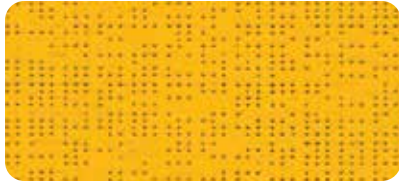
Lagoon 69.6 in 92-2160



new Celestial grey 69.6 in 92-51178



new French blue 69.6 in 92-51182



Buttercup 69,6 in

92-2166



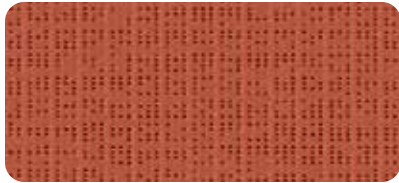
Orange 69,6 in

92-8204



Copper 69,6 in

92-50274



new Brick 69,6 in

92-51180



Red 69,6 in

92-8255



new Deep red 69,6 in

92-51181

new Colors Collection

PATIO



INDOOR
SHADES



OUTDOOR
SHADES



A range of colors
to match all your
projects

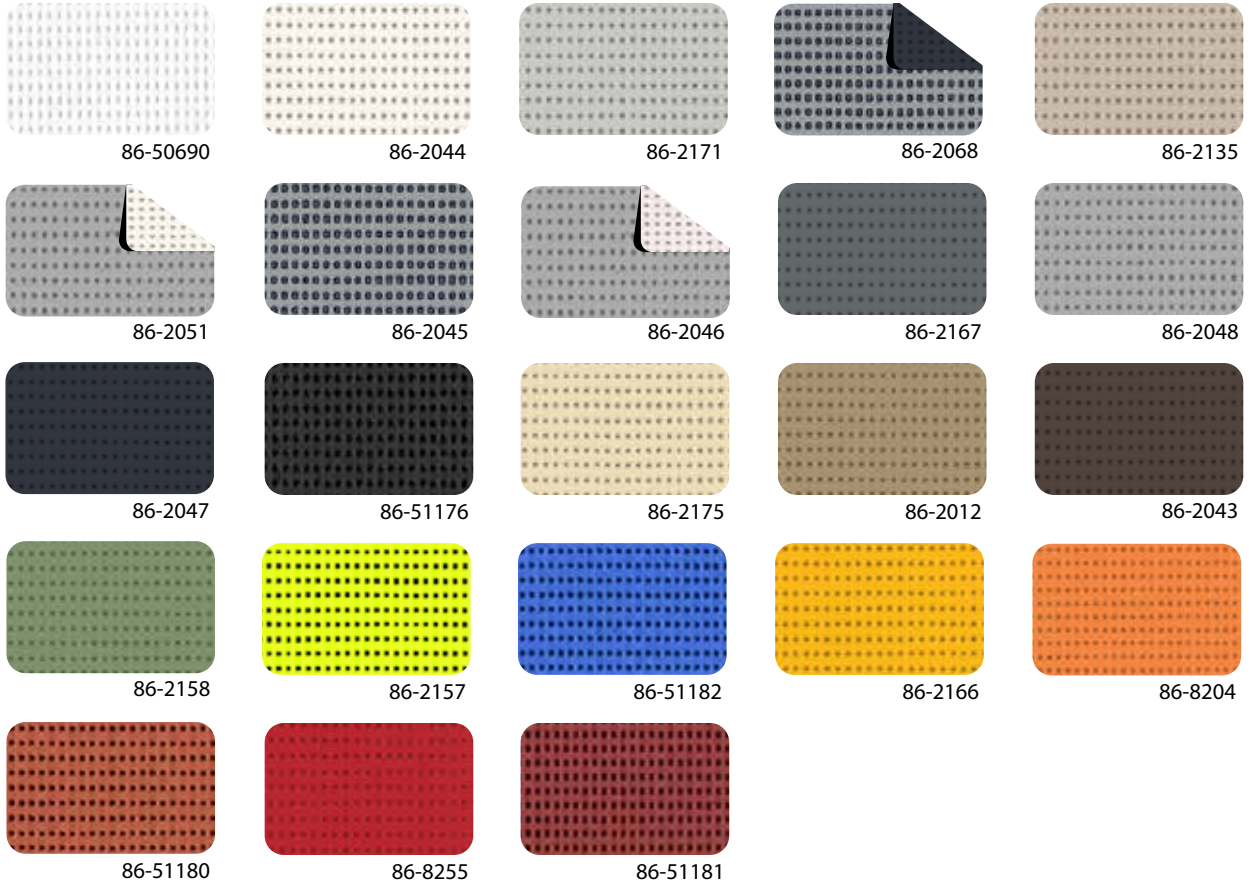
The new Soltis Perform 92 range features colors chosen by our design team to coordinate with the entire building's environment (entry, windows and facade). These are the most common colors based on RAL and NCS references.



Download
our RAL and NCS
equivalency
library

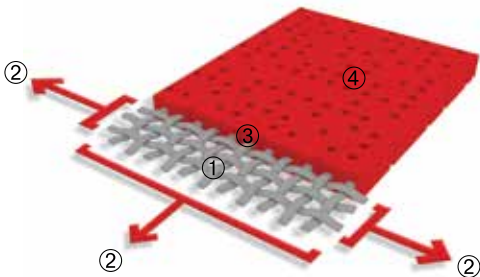


■ **Matching colors with Soltis Horizon 86**



■ **Exclusive Précontraint® technology**

Patented worldwide, the Précontraint® technology by Serge Ferrari involves keeping the composite under tension throughout the manufacturing process. This gives our materials exceptional performance that enables them to surpass market standards in terms of dimensional stability, mechanical strength, coating thickness and flatness.



High-tenacity polyester micro-yarn base cloth	①	Superior elongation and tear resistance
A coating with fabrics under bi-axial constant tension in both warp and weft directions	②	No deformation during processing and use
Thicker coating at the top of the yarns and a dirt resistant surface treatment	③	Superior aesthetic and mechanical durability
Exceptional flatness and thinness	④	Smooth easy to clean finish, space saving, easy rolling

■ Solar and light properties (according to EN 14501)

		Width (in)		TS	RS	AS	TV n-h	EN 13363-2* Glazing D	
		69	105					g_{tot}^e	g_{tot}^i
92-2012		•	•	7	30	63	6	0.04	0.24
92-2043		•	•	4	13	83	4	0.04	0.28
92-2044		•	•	19	68	13	17	0.07	0.11
92-2045		•	•	4	35	61	4	0.03	0.22
92-2046	A	•	•	12	46	42	10	0.05	0.18
92-2046	B	•	•	12	63	25	10	0.05	0.14
92-2047		•	•	5	8	87	5	0.04	0.28
92-2048		•	•	8	46	46	8	0.04	0.18
92-2051	A	•	•	12	49	39	11	0.06	0.17
92-2051	B	•	•	12	70	18	11	0.05	0.10
92-2068	A	•		4	34	62	4	0.03	0.22
92-2068	B	•		4	8	88	4	0.04	0.28
92-2074	A	•	•	4	37	59	4	0.03	0.21
92-2074	B	•	•	4	25	71	4	0.03	0.24
92-2135		•	•	11	46	43	8	0.04	0.19
92-2149		•		5	16	79	4	0.04	0.27
92-2157		•		15	51	34	10	0.05	0.20
92-2158		•		7	28	65	5	0.03	0.24
92-2160		•		11	36	53	5	0.04	0.24
92-2166		•		21	54	25	17	0.07	0.19
92-2167		•	•	6	19	75	5	0.04	0.26

		Width (in)		TS	RS	AS	TV n-h	EN 13363-2* Glazing D	
		69	105					g_{tot}^e	g_{tot}^i
92-2171		•	•	8	41	51	6	0.04	0.20
92-2175		•	•	19	65	16	17	0.07	0.14
new 92-8056		•		2	10	88	2	0.03	0.28
92-8204		•		21	45	34	11	0.06	0.23
92-8255		•		12	28	60	4	0.05	0.27
92-50265		•	•	9	49	42	6	0.04	0.18
92-50266		•		4	19	77	4	0.03	0.26
92-50272		•	•	12	55	33	9	0.05	0.16
92-50273		•		8	42	50	5	0.04	0.21
92-50274		•		8	35	57	4	0.04	0.24
new 92-50303		•	•	15	63	22	10	0.05	0.15
new 92-50690		•	•	17	73	10	15	0.06	0.10
new 92-50843		•	•	13	62	25	10	0.05	0.14
new 92-50850		•	•	5	31	64	3	0.03	0.23
new 92-51176		•	•	3	5	92	3	0.03	0.29
new 92-51177		•	•	3	18	79	3	0.03	0.26
new 92-51178		•		5	20	75	4	0.03	0.26
new 92-51179		•		6	29	65	4	0.03	0.24
new 92-51180		•		6	27	67	3	0.03	0.26
new 92-51181		•		4	17	79	3	0.03	0.28
new 92-51182		•		8	26	66	4	0.03	0.27

A: Aluminum side exposed to the sun

B: Colored side exposed to the sun

TS: Solar transmission in %

RS: Solar reflection in %

AS: Solar absorption in %

TS + RS + AS = 100% of the incident energy

TV n-h: Normal visible light transmission - hemispherical in %

g_{tot}^e : External solar factor

g_{tot}^i : Indoor solar factor







*** Detailed EN 13363-2 method**

Takes into account the spectral values of glazing transmission and reflection + blind complex for calculating the solar factor g_{tot} . Type "D" glazing: insulating double glazing with low emissivity on surface 2 (4 + 16 + 4; Argon filling) $g = 0.32 - U = 1.1$



Soltis

Perform 92

	■ Technical properties	Standards
Openness factor	4%	
Weight	12.3 oz/yd ²	EN ISO 2286-2
Thickness	0.45 mm	
Width	69.6 in - 105.1 in	
■ Length of rolls		
Standard length in 69.6 in	54.6 yds	
Standard length in 105.1 in	43.7 yds	
■ Physical properties		
Tensile strength (warp/weft)	310/210 daN/ 5 cm	EN ISO 1421
Tear strength (warp/weft)	45/20 daN	DIN 53.363
■ Flame retardancy		
Rating	Method 1/NFPA 701 — T19 / CSFM — Class A/ASTM E84 — M1/NFP 92-507 — B1/DIN 4102-1 BS 7837 — BS 5867 Schwerbrennbar-Q1-Tr1 /ONORM A 3800-1 — Class 1/EN 13373 M1/UNE 23.727-90 — VKF 5.3/SN 198898 — 1530.3/AS/NZS — G1/GOST 30244-94	
Euroclass	B-s2,d0	EN 13501-1
■ Management systems		
Quality	ISO 9001	
■ Certifications, labels, guarantees, recycling		
     		
■ Tools and services		
<ul style="list-style-type: none"> — ACV and FDES available upon request — Personalized thermal performance simulation service available for your projects with Soltis solar protection: contact your Serge Ferrari representative — Tool for assessing achievable energy savings thanks to Soltis sun protection: www.textinergie.org — Documents and photo libraries: www.sergeferrari.com/us 		

The technical data above are average values with a +/- 5% tolerance.

The buyer of our products is fully responsible for their application or their transformation concerning any possible third party. The buyer of our products is responsible for their implementation and installation in compliance with standards, codes of practice and safety regulations in force in destination countries. For information on our contractual warranty, please refer to the relevant terms and conditions.

The values quoted above represent results of tests performed in compliance with common design practices and are provided for information only to enable customers to make the best use of our products. Our products are subject to changes prompted by technological developments. We reserve the right to modify their characteristics at any time. The buyer of our products is responsible for checking the validity of the above data.

For metallic and interferential colors, a difference in shade may be observed in different roll widths for the same reference: small width (69.6 in) and large width (105.1 in). We advise strongly against combined assembly of these.